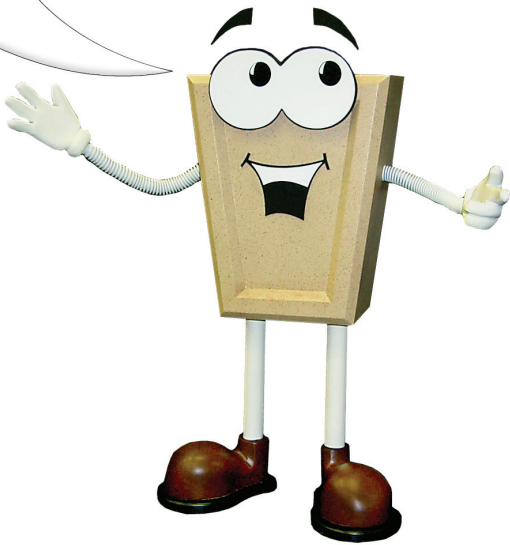


# Here's How to Order



Ed C. Stone

## ORDERING

Thank you for choosing Edwards Cast Stone Company for your Architectural Cast Stone needs. For your convenience we have set up each item to have its own page as an order form or ask your local dealer for an order form. Please copy desired page, fill out and fax or call your local Edwards Cast Stone Company dealer.

## SHOP DRAWINGS

You may receive a shop drawing of your order for approval. If ordering a customized item some shop drawing cost may occur but will be included in a quote for your approval.

## Sample Order Form

Sample Order Form				END CONDITIONS						See page 6 for details.	
PROFILE	COLOR <small>See page 5.</small>	HEIGHT (Y)	LENGTH	FINISHED END		OUTSIDE CORNER		INSIDE CORNER		QTY	
				LEFT	RIGHT	LEFT	RIGHT	LEFT	RIGHT		
E101	Light Gray	15 5/8"	3' 11 5/8"	✓	—	—	—	—	—	12	
E102	Buff	23 5/8"	3' 11 5/8"	—	✓	—	—	—	—	10	
			3' 11 5/8"								
			3' 11 5/8"								

Contact: John Doe Company: Your Company Phone: (555) 555-1234 Fax: (555) 555-2345

## CONNECTIONS

Edwards Cast Stone can provide anchor slots and dowel holes per your request at no additional charge. Edwards will also quote and supply loose connection hardware for your next project.

## Standard Colors



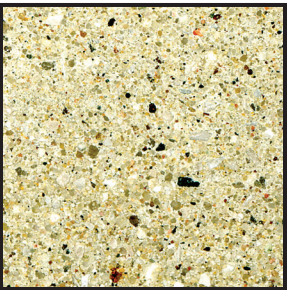
Buff  
Sample 23



Tan  
Sample 25



White  
Sample 30



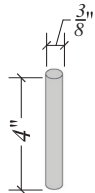
Light Gray  
Sample 31

\*Actual color may vary from sample shown.  
Other custom colors are available.

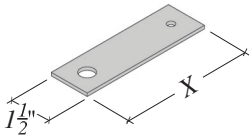
## Standard Connection Hardware

Available upon request.

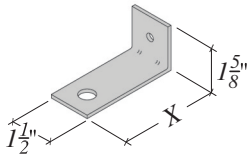
H101



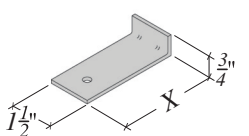
H102



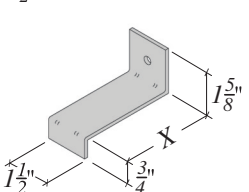
H103



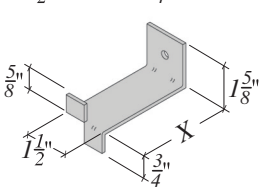
H104



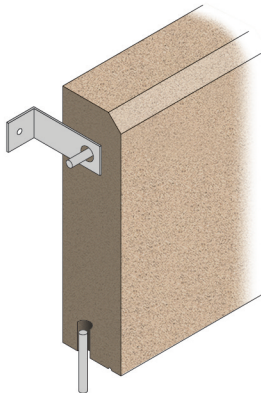
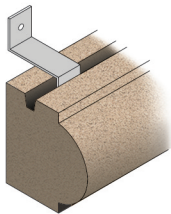
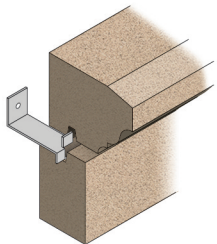
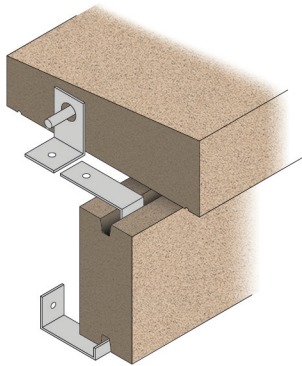
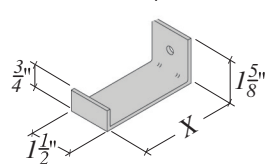
H105



H106



H107



## Connection Hardware

CONNECTION TYPE	LENGTH (X)	QTY
H102	5"	12

Contact: \_\_\_\_\_ Company: \_\_\_\_\_ Phone: \_\_\_\_\_ Fax: \_\_\_\_\_